

December 30, 2011

Mr. Bob Watson
607 Eight St. Ste. 2
Fort Madison, IA 52627

Re: Evaluation of MOC 7 Application at Swine CAFO

Dear Mr. Watson:

This summary report is in response to the air quality test conducted at a working swine CAFO barn as per the request you made for Inquest Environmental, Inc. (IEI) to evaluate the ambient air concentrations of ammonia (NH₃) and hydrogen sulfide (H₂S) of hog manure in a real life environment pre and post application of the product MOC 7.

On December 1, 2011 the following equipment was installed at the CAFO barn for the test:

- Climate controlled 8' x 6' mobile trailer.
- Thermo Environmental, Inc. Model 17C Ammonia analyzer. Range 0-20 parts per million (PPM).
- Thermo Environmental, Inc. Model 450i Hydrogen Sulfide analyzer. Range 0-10 parts per million (PPM).
- Heated sample line.
- Envirionics Model 4040 dilution gas calibrator.

Quality control calibrations were performed on the gas analyzers prior to the commencement of ambient air sampling.

The analyzers were allowed to warm up for approximately 24 hours prior to the start of sampling.

When reviewing the data presented, refer to the monitoring activities listed in the table below:

Date/Time	Activity	Comment
12/01/11 9:00 a.m.	Monitoring trailer installed at location and analyzers powered on and allowed to warm up for 24 hrs.	

12/02/11 3:00 p.m.	Heated sample line installed in swine barn.	NH ₃ analyzer over-ranged / analyzer was set for 20 ppm full scale.
12/04/11 12:45 p.m. to 2:15 p.m.	Quality assurance check on gas analyzers.	
12/14/11 8:45 a.m. to 2:45 p.m.	Quality assurance check on gas analyzers	
12/19/11 1:00 p.m. to 2:15 p.m.	Quality assurance check on gas analyzers	
12/20/11 9:00 a.m.	Barn ventilation fans shut off.	
12/20/11 9:30 a.m.	MOC 7 applied to barn's north manure pits.	
12/20/11 11:30 a.m.	MOC 7 applied to barn's south manure pits.	
12/20/11 1:30 p.m.	Testing completed	

Data Summary:

Background Air Quality:

Background H₂S concentration from 12/02/11 to 12/20/11 = 1.02 ppm
 Background NH₃ concentration from 12/02/11 to 12/20/11 = > 20 ppm*

*NH₃ concentrations exceeded the maximum range of the air analyzer which was set at its maximum of 20 ppm.

Post Application of MOC7 Air Quality:

H₂S minimum 15 minute average concentration during application = 0.247 ppm
 H₂S average 15 minute concentration during entire application = 0.315 ppm
 NH₃ minimum 15 minute average concentration during application = 12.5 ppm
 NH₃ average 15 minute concentration during entire application = 14.4 ppm

Observations:

- Background NH₃ could not be determined due to the background concentrations of NH₃ exceeding the analyzer's full scale limit of 20 ppm.
- Spraying the manure pits with MOC 7 reduced the amount of H₂S in the air by 75.8%.
- Spraying the manure pits with MOC 7 reduced the amount of NH₃ in the air to a minimum average of 12.5 ppm which is a reduction of 37.5% assuming that the background concentration was only 20 ppm. The overall reduction of NH₃ is believed to be a greater percentage than 37.5% since background concentrations of NH₃ were definitely greater than 20 ppm.

Conclusions:

- The data collected indicates that the application of MOC 7 to hog manure in a working CAFO barn significantly reduced the H₂S and NH₃ ambient air concentrations.

Attachment A contains the raw data collected during the air quality test.

If I can be of further assistance, please let me know.

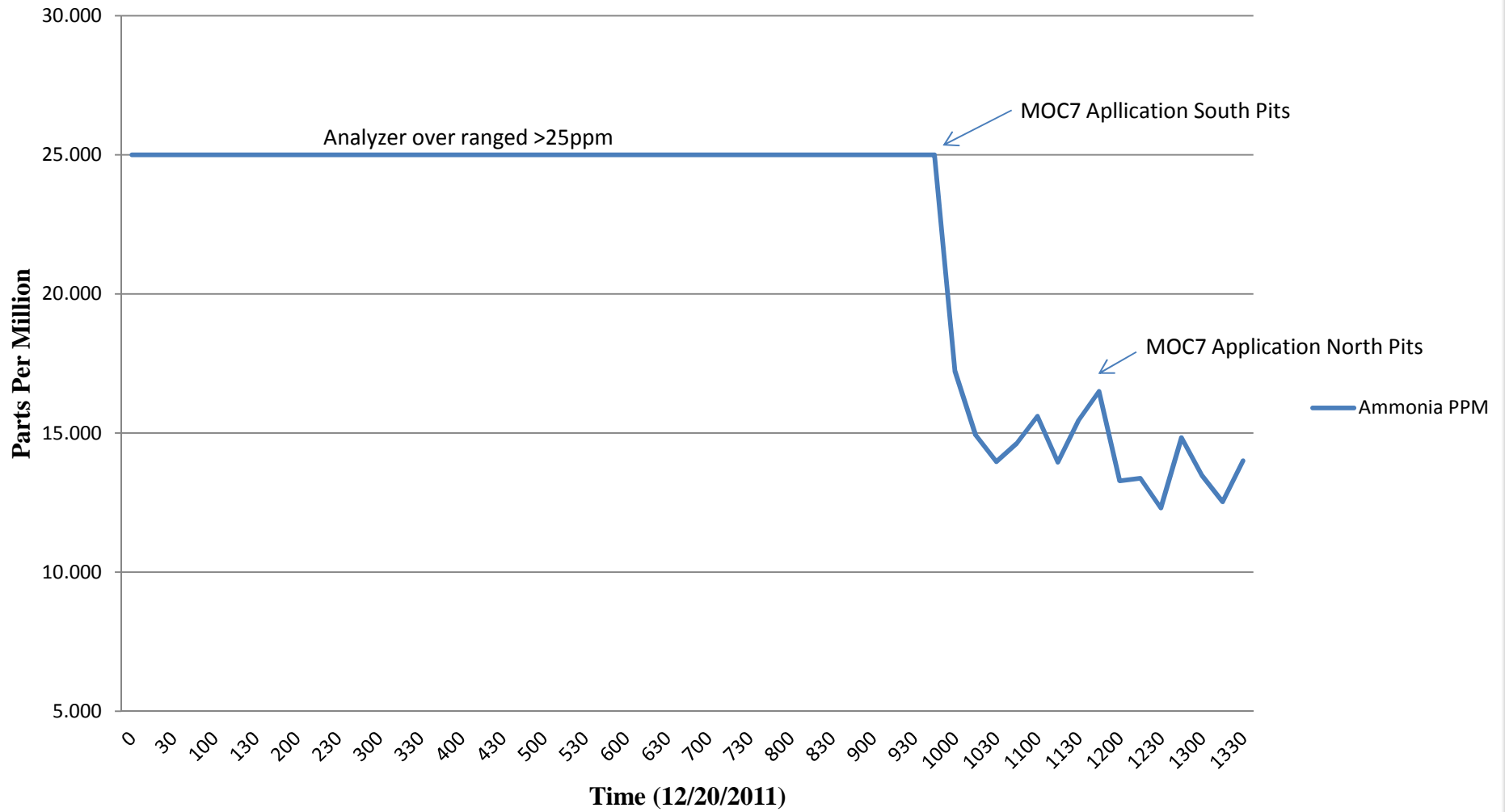
Best Regards,

A handwritten signature in cursive script that reads "Jerry Monnig".

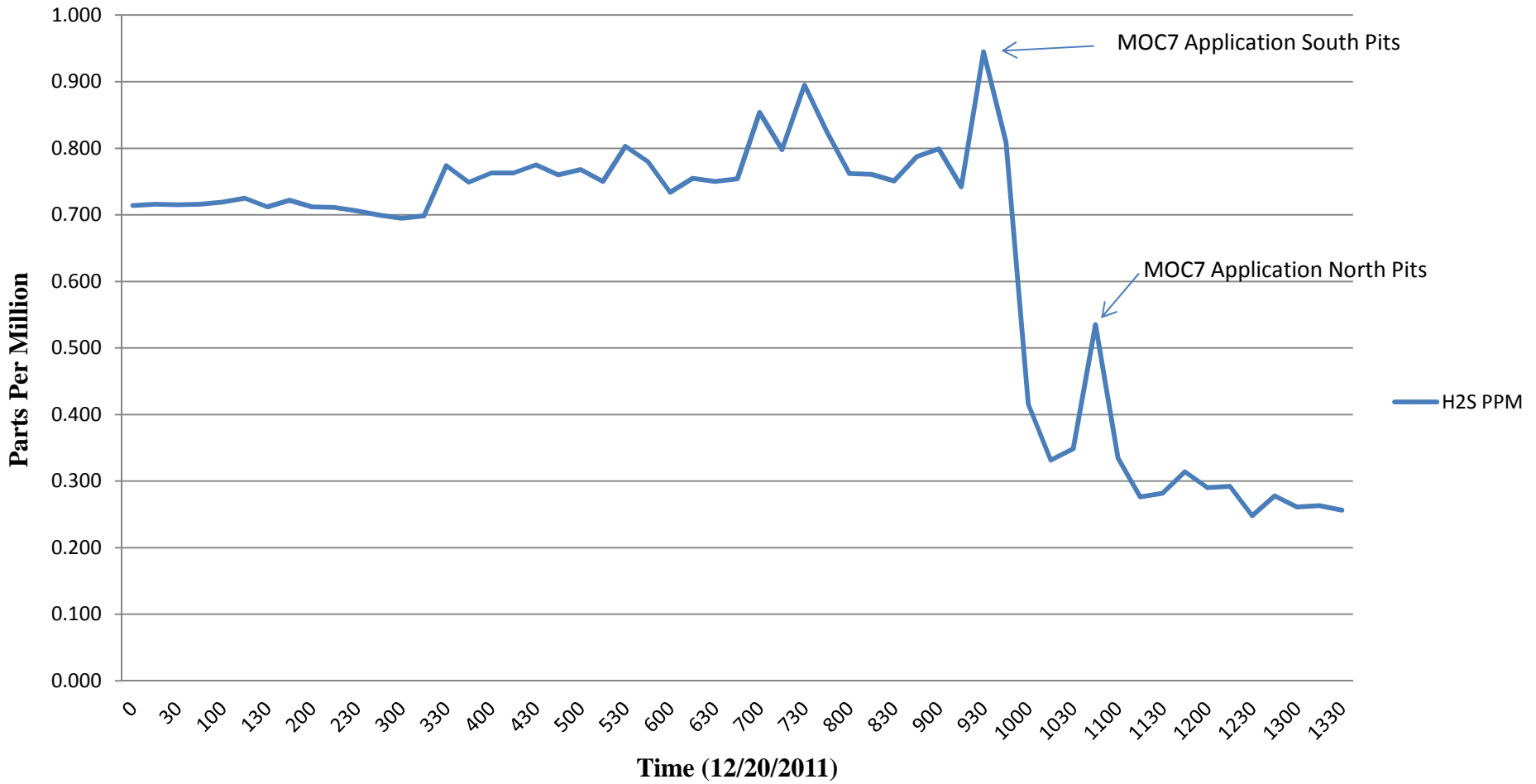
Jerry Monnig
Environmental Specialist
Inquest Environmental, Inc.

Attachment A

Hog CAFO Ammonia Readings 12/20/2011



Hog CAFO H2S Readings for 12/20/2011



**CAFO Air Quality
MOC7 Treated Data**

Year	Julian Day	Time	H2S PPM	NH3 PPM
2011	354	1000	0.416	17.2
2011	354	1015	0.331	14.9
2011	354	1030	0.349	13.7
2011	354	1045	0.535	14.6
2011	354	1100	0.335	15.6
2011	354	1115	0.276	13.9
2011	354	1130	0.282	15.4
2011	354	1145	0.314	16.5
2011	354	1200	0.290	13.3
2011	354	1215	0.292	13.2
2011	354	1230	0.248	12.3
2011	354	1245	0.278	14.8
2011	354	1300	0.261	13.4
2011	354	1315	0.263	12.5
2011	354	1330	0.257	14.0

CAFO Air Quality Background Data

Year	Julian Day	Time	H2S PPM	NH3 PPM
2011	336	1530	1.122	>20
2011	336	1545	1.042	>20
2011	336	1600	1.060	>20
2011	336	1615	1.262	>20
2011	336	1630	1.238	>20
2011	336	1645	1.146	>20
2011	336	1700	1.272	>20
2011	336	1715	1.170	>20
2011	336	1730	1.319	>20
2011	336	1745	1.302	>20
2011	336	1800	1.450	>20
2011	336	1815	1.332	>20
2011	336	1830	1.227	>20
2011	336	1845	1.353	>20
2011	336	1900	1.311	>20
2011	336	1915	1.520	>20
2011	336	1930	1.330	>20
2011	336	1945	1.231	>20
2011	336	2000	1.404	>20
2011	336	2015	1.600	>20
2011	336	2030	1.416	>20
2011	336	2045	1.258	>20
2011	336	2100	1.323	>20
2011	336	2115	1.340	>20
2011	336	2130	1.165	>20
2011	336	2145	1.134	>20
2011	336	2200	1.101	>20
2011	336	2215	1.196	>20
2011	336	2230	1.287	>20
2011	336	2245	1.161	>20
2011	336	2300	1.112	>20
2011	336	2315	1.284	>20
2011	336	2330	1.191	>20
2011	336	2345	1.110	>20
2011	337	0	1.219	>20

CAFO Air Quality Background Data

Year	Julian Day	Time	H2S PPM	NH3 PPM
2011	337	15	1.175	>20
2011	337	30	1.130	>20
2011	337	45	1.166	>20
2011	337	100	1.070	>20
2011	337	115	1.038	>20
2011	337	130	1.038	>20
2011	337	145	1.025	>20
2011	337	200	1.076	>20
2011	337	215	1.081	>20
2011	337	230	1.042	>20
2011	337	245	1.029	>20
2011	337	300	1.059	>20
2011	337	315	1.000	>20
2011	337	330	1.024	>20
2011	337	345	1.156	>20
2011	337	400	1.131	>20
2011	337	415	1.056	>20
2011	337	430	1.058	>20
2011	337	445	1.015	>20
2011	337	500	1.052	>20
2011	337	515	1.059	>20
2011	337	530	1.111	>20
2011	337	545	1.125	>20
2011	337	600	1.128	>20
2011	337	615	1.211	>20
2011	337	630	1.052	>20
2011	337	645	1.092	>20
2011	337	700	1.145	>20
2011	337	715	1.166	>20
2011	337	730	1.190	>20
2011	337	745	1.168	>20
2011	337	800	1.099	>20
2011	337	815	1.079	>20
2011	337	830	1.111	>20
2011	337	845	1.113	>20

CAFO Air Quality Background Data

Year	Julian Day	Time	H2S PPM	NH3 PPM
2011	337	900	1.149	>20
2011	337	915	1.177	>20
2011	337	930	1.212	>20
2011	337	945	1.191	>20
2011	337	1000	1.385	>20
2011	337	1015	1.226	>20
2011	337	1030	1.089	>20
2011	337	1045	1.079	>20
2011	337	1100	1.064	>20
2011	337	1115	1.063	>20
2011	337	1130	0.990	>20
2011	337	1145	0.859	>20
2011	337	1200	0.913	>20
2011	337	1215	0.889	>20
2011	337	1230	0.823	>20
2011	337	1245	0.815	>20
2011	337	1300	0.771	>20
2011	337	1315	0.695	>20
2011	337	1330	0.682	>20
2011	337	1345	0.689	>20
2011	337	1400	0.695	>20
2011	337	1415	0.699	>20
2011	337	1430	0.723	>20
2011	337	1445	0.817	>20
2011	337	1500	0.868	>20
2011	337	1515	0.800	>20
2011	337	1530	0.786	>20
2011	337	1545	0.787	>20
2011	337	1600	0.802	>20
2011	337	1615	0.791	>20
2011	337	1630	0.798	>20
2011	337	1645	0.783	>20
2011	337	1700	0.848	>20
2011	337	1715	0.775	>20
2011	337	1730	0.827	>20

CAFO Air Quality Background Data

Year	Julian Day	Time	H2S PPM	NH3 PPM
2011	337	1745	0.875	>20
2011	337	1800	0.991	>20
2011	337	1815	0.980	>20
2011	337	1830	0.968	>20
2011	337	1845	1.002	>20
2011	337	1900	1.127	>20
2011	337	1915	1.191	>20
2011	337	1930	1.105	>20
2011	337	1945	1.083	>20
2011	337	2000	0.984	>20
2011	337	2015	1.024	>20
2011	337	2030	0.945	>20
2011	337	2045	0.941	>20
2011	337	2100	1.031	>20
2011	337	2115	0.997	>20
2011	337	2130	0.999	>20
2011	337	2145	1.014	>20
2011	337	2200	1.009	>20
2011	337	2215	0.938	>20
2011	337	2230	0.935	>20
2011	337	2245	0.875	>20
2011	337	2300	0.773	>20
2011	337	2315	0.779	>20
2011	337	2330	0.744	>20
2011	337	2345	0.778	>20
2011	338	0	0.859	>20
2011	338	15	0.906	>20
2011	338	30	0.881	>20
2011	338	45	0.975	>20
2011	338	100	1.106	>20
2011	338	115	1.169	>20
2011	338	130	1.241	>20
2011	338	145	1.248	>20
2011	338	200	1.275	>20
2011	338	215	1.366	>20

CAFO Air Quality Background Data

Year	Julian Day	Time	H2S PPM	NH3 PPM
2011	338	230	1.351	>20
2011	338	245	1.316	>20
2011	338	300	1.336	>20
2011	338	315	1.340	>20
2011	338	330	1.406	>20
2011	338	345	1.561	>20
2011	338	400	1.493	>20
2011	338	415	1.485	>20
2011	338	430	1.557	>20
2011	338	445	1.708	>20
2011	338	500	1.573	>20
2011	338	515	1.737	>20
2011	338	530	1.627	>20
2011	338	545	1.553	>20
2011	338	600	1.432	>20
2011	338	615	1.510	>20
2011	338	630	1.395	>20
2011	338	645	1.361	>20
2011	338	700	1.484	>20
2011	338	715	1.515	>20
2011	338	730	1.501	>20
2011	338	745	1.359	>20
2011	338	800	1.613	>20
2011	338	815	1.460	>20
2011	338	830	1.430	>20
2011	338	845	1.402	>20
2011	338	900	1.412	>20
2011	338	915	1.385	>20
2011	338	930	1.542	>20
2011	338	945	1.564	>20
2011	338	1000	1.395	>20
2011	338	1015	1.440	>20
2011	338	1030	1.458	>20
2011	338	1045	1.342	>20
2011	338	1100	1.515	>20

CAFO Air Quality Background Data

Year	Julian Day	Time	H2S PPM	NH3 PPM
2011	338	1115	1.449	>20
2011	338	1130	1.350	>20
2011	338	1145	1.342	>20
2011	338	1200	1.419	>20
2011	338	1215	1.384	>20
2011	338	1230	1.294	>20
2011	338	1245	1.261	NA
2011	338	1300	1.262	NA
2011	338	1315	1.231	NA
2011	338	1330	1.348	NA
2011	338	1345	1.233	NA
2011	338	1400	1.283	NA
2011	338	1415	1.316	NA
2011	338	1430	1.322	>20
2011	338	1445	1.280	>20
2011	338	1500	1.352	>20
2011	338	1515	1.475	>20
2011	338	1530	1.371	>20
2011	338	1545	1.401	>20
2011	338	1600	1.371	>20
2011	338	1615	1.314	>20
2011	338	1630	1.477	>20
2011	338	1645	1.367	>20
2011	338	1700	1.525	>20
2011	338	1715	1.451	>20
2011	338	1730	1.525	>20
2011	338	1745	1.493	>20
2011	338	1800	1.533	>20
2011	338	1815	1.542	>20
2011	338	1830	1.597	>20
2011	338	1845	1.578	>20
2011	338	1900	1.667	>20
2011	338	1915	1.671	>20
2011	338	1930	1.665	>20
2011	338	1945	1.740	>20

CAFO Air Quality Background Data

Year	Julian Day	Time	H2S PPM	NH3 PPM
2011	338	2000	1.723	>20
2011	338	2015	1.689	>20
2011	338	2030	1.687	>20
2011	338	2045	1.745	>20
2011	338	2100	1.658	>20
2011	338	2115	1.712	>20
2011	338	2130	1.733	>20
2011	338	2145	1.712	>20
2011	338	2200	1.740	>20
2011	338	2215	1.673	>20
2011	338	2230	1.740	>20
2011	338	2245	1.598	>20
2011	338	2300	1.714	>20
2011	338	2315	1.566	>20
2011	338	2330	1.728	>20
2011	338	2345	1.519	>20
2011	339	0	1.597	>20
2011	339	15	1.568	>20
2011	339	30	1.492	>20
2011	339	45	1.617	>20
2011	339	100	1.421	>20
2011	339	115	1.548	>20
2011	339	130	1.439	>20
2011	339	145	1.518	>20
2011	339	200	1.545	>20
2011	339	215	1.632	>20
2011	339	230	1.570	>20
2011	339	245	1.476	>20
2011	339	300	1.492	>20
2011	339	315	1.436	>20
2011	339	330	1.552	>20
2011	339	345	1.591	>20
2011	339	400	1.477	>20
2011	339	415	1.590	>20
2011	339	430	1.548	>20

CAFO Air Quality Background Data

Year	Julian Day	Time	H2S PPM	NH3 PPM
2011	339	445	1.590	>20
2011	339	500	1.780	>20
2011	339	515	1.632	>20
2011	339	530	1.743	>20
2011	339	545	1.912	>20
2011	339	600	1.865	>20
2011	339	615	1.785	>20
2011	339	630	1.672	>20
2011	339	645	1.732	>20
2011	339	700	1.562	>20
2011	339	715	1.436	>20
2011	339	730	1.492	>20
2011	339	745	1.444	>20
2011	339	800	1.639	>20
2011	339	815	1.512	>20
2011	339	830	1.595	>20
2011	339	845	1.660	>20
2011	339	900	1.539	>20
2011	339	915	1.578	>20
2011	339	930	1.697	>20
2011	339	945	1.541	>20
2011	339	1000	1.618	>20
2011	339	1015	1.624	>20
2011	339	1030	1.498	>20
2011	339	1045	1.375	>20
2011	339	1100	1.033	>20
2011	339	1115	0.859	>20
2011	339	1130	0.867	>20
2011	339	1145	0.646	>20
2011	339	1200	0.699	>20
2011	339	1215	0.606	>20
2011	339	1230	0.582	>20
2011	339	1245	0.588	>20
2011	339	1300	0.598	>20
2011	339	1315	0.634	>20

CAFO Air Quality Background Data

Year	Julian Day	Time	H2S PPM	NH3 PPM
2011	339	1330	1.064	>20
2011	339	1345	1.510	>20
2011	339	1400	1.512	>20
2011	339	1415	1.473	>20
2011	339	1430	1.516	>20
2011	339	1445	1.398	>20
2011	339	1500	1.265	>20
2011	339	1515	1.326	>20
2011	339	1530	1.338	>20
2011	339	1545	1.250	>20
2011	339	1600	1.326	>20
2011	339	1615	1.400	>20
2011	339	1630	1.500	>20
2011	339	1645	1.645	>20
2011	339	1700	1.614	>20
2011	339	1715	1.577	>20
2011	339	1730	1.626	>20
2011	339	1745	1.635	>20
2011	339	1800	1.683	>20
2011	339	1815	1.480	>20
2011	339	1830	1.521	>20
2011	339	1845	1.589	>20
2011	339	1900	1.634	>20
2011	339	1915	1.655	>20
2011	339	1930	1.460	>20
2011	339	1945	1.553	>20
2011	339	2000	1.645	>20
2011	339	2015	1.573	>20
2011	339	2030	1.518	>20
2011	339	2045	1.393	>20
2011	339	2100	1.386	>20
2011	339	2115	1.362	>20
2011	339	2130	1.434	>20
2011	339	2145	1.433	>20
2011	339	2200	1.313	>20

CAFO Air Quality Background Data

Year	Julian Day	Time	H2S PPM	NH3 PPM
2011	339	2215	1.308	>20
2011	339	2230	1.294	>20
2011	339	2245	1.239	>20
2011	339	2300	1.305	>20
2011	339	2315	1.368	>20
2011	339	2330	1.269	>20
2011	339	2345	1.319	>20
2011	340	0	1.354	>20
2011	340	15	1.416	>20
2011	340	30	1.386	>20
2011	340	45	1.320	>20
2011	340	100	1.341	>20
2011	340	115	1.364	>20
2011	340	130	1.346	>20
2011	340	145	1.367	>20
2011	340	200	1.372	>20
2011	340	215	1.421	>20
2011	340	230	1.320	>20
2011	340	245	1.416	>20
2011	340	300	1.346	>20
2011	340	315	1.442	>20
2011	340	330	1.410	>20
2011	340	345	1.335	>20
2011	340	400	1.432	>20
2011	340	415	1.351	>20
2011	340	430	1.323	>20
2011	340	445	1.433	>20
2011	340	500	1.418	>20
2011	340	515	1.363	>20
2011	340	530	1.504	>20
2011	340	545	1.464	>20
2011	340	600	1.467	>20
2011	340	615	1.440	>20
2011	340	630	1.351	>20
2011	340	645	1.457	>20

CAFO Air Quality Background Data

Year	Julian Day	Time	H2S PPM	NH3 PPM
2011	340	700	1.430	>20
2011	340	715	1.400	>20
2011	340	730	1.416	>20
2011	340	745	1.336	>20
2011	340	800	1.405	>20
2011	340	815	1.400	>20
2011	340	830	1.460	>20
2011	340	845	1.429	>20
2011	340	900	1.437	>20
2011	340	915	1.313	>20
2011	340	930	1.423	>20
2011	340	945	1.328	>20
2011	340	1000	1.399	>20
2011	340	1015	1.318	>20
2011	340	1030	1.310	>20
2011	340	1045	1.322	>20
2011	340	1100	1.188	>20
2011	340	1115	0.914	>20
2011	340	1130	0.951	>20
2011	340	1145	0.952	>20
2011	340	1200	0.699	>20
2011	340	1215	0.580	>20
2011	340	1230	0.733	>20
2011	340	1245	0.608	>20
2011	340	1300	0.585	>20
2011	340	1315	0.624	>20
2011	340	1330	0.606	>20
2011	340	1345	0.657	>20
2011	340	1400	0.777	>20
2011	340	1415	0.664	>20
2011	340	1430	0.437	>20
2011	340	1445	0.637	>20
2011	340	1500	0.731	>20
2011	340	1515	1.022	>20
2011	340	1530	1.192	>20

CAFO Air Quality Background Data

Year	Julian Day	Time	H2S PPM	NH3 PPM
2011	340	1545	1.409	>20
2011	340	1600	1.351	>20
2011	340	1615	1.434	>20
2011	340	1630	1.359	>20
2011	340	1645	1.297	>20
2011	340	1700	1.297	>20
2011	340	1715	1.287	>20
2011	340	1730	1.357	>20
2011	340	1745	1.375	>20
2011	340	1800	1.336	>20
2011	340	1815	1.454	>20
2011	340	1830	1.326	>20
2011	340	1845	1.428	>20
2011	340	1900	1.396	>20
2011	340	1915	1.486	>20
2011	340	1930	1.345	>20
2011	340	1945	1.363	>20
2011	340	2000	1.427	>20
2011	340	2015	1.320	>20
2011	340	2030	1.374	>20
2011	340	2045	1.255	>20
2011	340	2100	1.339	>20
2011	340	2115	1.233	>20
2011	340	2130	1.308	>20
2011	340	2145	1.229	>20
2011	340	2200	1.330	>20
2011	340	2215	1.400	>20
2011	340	2230	1.585	>20
2011	340	2245	1.459	>20
2011	340	2300	1.684	>20
2011	340	2315	1.574	>20
2011	340	2330	1.755	>20
2011	340	2345	1.686	>20
2011	341	0	1.572	>20
2011	341	15	1.563	>20

**CAFO Air Quality
Background Data**

Year	Julian Day	Time	H2S PPM	NH3 PPM
2011	341	30	1.525	>20
2011	341	45	1.650	>20
2011	341	100	1.593	>20
2011	341	115	1.694	>20
2011	341	130	1.683	>20
2011	341	145	1.700	>20
2011	341	200	1.876	>20
2011	341	215	1.741	>20
2011	341	230	1.800	>20
2011	341	245	1.831	>20
2011	341	300	1.818	>20
2011	341	315	1.834	>20
2011	341	330	1.676	>20
2011	341	345	1.734	>20
2011	341	400	1.756	>20
2011	341	415	1.853	>20
2011	341	430	1.782	>20
2011	341	445	1.740	>20
2011	341	500	1.794	>20
2011	341	515	1.836	>20
2011	341	530	1.841	>20
2011	341	545	1.734	>20
2011	341	600	1.525	>20
2011	341	615	1.592	>20
2011	341	630	1.668	>20
2011	341	645	1.782	>20
2011	341	700	1.623	>20
2011	341	715	1.702	>20
2011	341	730	1.610	>20
2011	341	745	1.670	>20
2011	341	800	1.717	>20
2011	341	815	1.561	>20
2011	341	830	1.565	>20
2011	341	845	1.438	>20
2011	341	900	1.351	>20

CAFO Air Quality Background Data

Year	Julian Day	Time	H2S PPM	NH3 PPM
2011	341	915	1.304	>20
2011	341	930	1.233	>20
2011	341	945	1.154	>20
2011	341	1000	1.135	>20
2011	341	1015	1.192	>20
2011	341	1030	1.100	>20
2011	341	1045	1.110	>20
2011	341	1100	1.031	>20
2011	341	1115	0.980	>20
2011	341	1130	0.984	>20
2011	341	1145	1.044	>20
2011	341	1200	0.960	>20
2011	341	1215	0.843	>20
2011	341	1230	0.804	>20
2011	341	1245	0.848	>20
2011	341	1300	0.788	>20
2011	341	1315	0.765	>20
2011	341	1330	0.789	>20
2011	341	1345	0.732	>20
2011	341	1400	0.737	>20
2011	341	1415	0.738	>20
2011	341	1430	0.733	>20
2011	341	1445	0.730	>20
2011	341	1500	0.754	>20
2011	341	1515	0.741	>20
2011	341	1530	0.838	>20
2011	341	1545	0.835	>20
2011	341	1600	0.842	>20
2011	341	1615	0.871	>20
2011	341	1630	0.998	>20
2011	341	1645	1.106	>20
2011	341	1700	1.139	>20
2011	341	1715	1.151	>20
2011	341	1730	1.193	>20
2011	341	1745	1.116	>20

CAFO Air Quality Background Data

Year	Julian Day	Time	H2S PPM	NH3 PPM
2011	341	1800	1.219	>20
2011	341	1815	1.164	>20
2011	341	1830	1.127	>20
2011	341	1845	1.176	>20
2011	341	1900	1.070	>20
2011	341	1915	1.173	>20
2011	341	1930	1.111	>20
2011	341	1945	1.254	>20
2011	341	2000	1.147	>20
2011	341	2015	1.243	>20
2011	341	2030	1.160	>20
2011	341	2045	1.132	>20
2011	341	2100	1.222	>20
2011	341	2115	1.125	>20
2011	341	2130	1.180	>20
2011	341	2145	1.135	>20
2011	341	2200	1.240	>20
2011	341	2215	1.167	>20
2011	341	2230	1.264	>20
2011	341	2245	1.236	>20
2011	341	2300	1.214	>20
2011	341	2315	1.271	>20
2011	341	2330	1.175	>20
2011	341	2345	1.234	>20
2011	342	0	1.261	>20
2011	342	15	1.226	>20
2011	342	30	1.250	>20
2011	342	45	1.270	>20
2011	342	100	1.269	>20
2011	342	115	1.366	>20
2011	342	130	1.349	>20
2011	342	145	1.297	>20
2011	342	200	1.342	>20
2011	342	215	1.388	>20
2011	342	230	1.334	>20

CAFO Air Quality Background Data

Year	Julian Day	Time	H2S PPM	NH3 PPM
2011	342	245	1.384	>20
2011	342	300	1.388	>20
2011	342	315	1.295	>20
2011	342	330	1.329	>20
2011	342	345	1.361	>20
2011	342	400	1.369	>20
2011	342	415	1.357	>20
2011	342	430	1.338	>20
2011	342	445	1.423	>20
2011	342	500	1.480	>20
2011	342	515	1.412	>20
2011	342	530	1.480	>20
2011	342	545	1.403	>20
2011	342	600	1.469	>20
2011	342	615	1.471	>20
2011	342	630	1.443	>20
2011	342	645	1.500	>20
2011	342	700	1.517	>20
2011	342	715	1.472	>20
2011	342	730	1.532	>20
2011	342	745	1.552	>20
2011	342	800	1.385	>20
2011	342	815	1.379	>20
2011	342	830	1.301	>20
2011	342	845	1.171	>20
2011	342	900	1.227	>20
2011	342	915	1.138	>20
2011	342	930	1.036	>20
2011	342	945	1.144	>20
2011	342	1000	1.011	>20
2011	342	1015	0.946	>20
2011	342	1030	0.851	>20
2011	342	1045	0.768	>20
2011	342	1100	0.617	>20
2011	342	1115	0.615	>20

**CAFO Air Quality
Background Data**

Year	Julian Day	Time	H2S PPM	NH3 PPM
2011	342	1130	0.652	>20
2011	342	1145	0.620	>20
2011	342	1200	0.555	>20
2011	342	1215	0.596	>20
2011	342	1230	0.603	>20
2011	342	1245	0.648	>20
2011	342	1300	0.663	>20
2011	342	1315	0.658	>20
2011	342	1330	0.643	>20
2011	342	1345	0.648	>20
2011	342	1400	0.691	>20
2011	342	1415	0.644	>20
2011	342	1430	0.664	>20
2011	342	1445	0.681	>20
2011	342	1500	0.678	>20
2011	342	1515	0.691	>20
2011	342	1530	0.736	>20
2011	342	1545	0.713	>20
2011	342	1600	0.795	>20
2011	342	1615	0.822	>20
2011	342	1630	0.866	>20
2011	342	1645	0.880	>20
2011	342	1700	0.928	>20
2011	342	1715	0.920	>20
2011	342	1730	1.023	>20
2011	342	1745	1.039	>20
2011	342	1800	1.004	>20
2011	342	1815	1.033	>20
2011	342	1830	1.014	>20
2011	342	1845	1.002	>20
2011	342	1900	1.146	>20
2011	342	1915	1.050	>20
2011	342	1930	1.019	>20
2011	342	1945	1.029	>20
2011	342	2000	1.093	>20

CAFO Air Quality Background Data

Year	Julian Day	Time	H2S PPM	NH3 PPM
2011	342	2015	1.128	>20
2011	342	2030	1.060	>20
2011	342	2045	1.180	>20
2011	342	2100	1.040	>20
2011	342	2115	1.070	>20
2011	342	2130	1.058	>20
2011	342	2145	1.005	>20
2011	342	2200	1.040	>20
2011	342	2215	1.098	>20
2011	342	2230	1.050	>20
2011	342	2245	1.129	>20
2011	342	2300	1.082	>20
2011	342	2315	1.121	>20
2011	342	2330	1.093	>20
2011	342	2345	1.175	>20
2011	343	0	1.048	>20
2011	343	15	1.085	>20
2011	343	30	1.095	>20
2011	343	45	1.110	>20
2011	343	100	1.074	>20
2011	343	115	1.107	>20
2011	343	130	1.046	>20
2011	343	145	0.982	>20
2011	343	200	1.034	>20
2011	343	215	1.038	>20
2011	343	230	1.078	>20
2011	343	245	0.984	>20
2011	343	300	0.974	>20
2011	343	315	1.076	>20
2011	343	330	1.020	>20
2011	343	345	1.032	>20
2011	343	400	1.093	>20
2011	343	415	1.025	>20
2011	343	430	1.107	>20
2011	343	445	1.054	>20

CAFO Air Quality Background Data

Year	Julian Day	Time	H2S PPM	NH3 PPM
2011	343	500	1.122	>20
2011	343	515	1.003	>20
2011	343	530	1.026	>20
2011	343	545	1.003	>20
2011	343	600	1.013	>20
2011	343	615	1.004	>20
2011	343	630	0.990	>20
2011	343	645	1.053	>20
2011	343	700	1.118	>20
2011	343	715	1.035	>20
2011	343	730	1.026	>20
2011	343	745	1.182	>20
2011	343	800	1.058	>20
2011	343	815	1.118	>20
2011	343	830	1.081	>20
2011	343	845	1.050	>20
2011	343	900	1.163	>20
2011	343	915	1.077	>20
2011	343	930	1.014	>20
2011	343	945	1.105	>20
2011	343	1000	0.985	>20
2011	343	1015	1.045	>20
2011	343	1030	0.956	>20
2011	343	1045	0.898	>20
2011	343	1100	0.864	>20
2011	343	1115	0.775	>20
2011	343	1130	0.715	>20
2011	343	1145	0.721	>20
2011	343	1200	0.704	>20
2011	343	1215	0.686	>20
2011	343	1230	0.700	>20
2011	343	1245	0.653	>20
2011	343	1300	0.621	>20
2011	343	1315	0.624	>20
2011	343	1330	0.598	>20

CAFO Air Quality Background Data

Year	Julian Day	Time	H2S PPM	NH3 PPM
2011	343	1345	0.599	>20
2011	343	1400	0.617	>20
2011	343	1415	0.626	>20
2011	343	1430	0.648	>20
2011	343	1445	0.622	>20
2011	343	1500	0.653	>20
2011	343	1515	0.661	>20
2011	343	1530	0.681	>20
2011	343	1545	0.742	>20
2011	343	1600	0.765	>20
2011	343	1615	0.809	>20
2011	343	1630	0.831	>20
2011	343	1645	0.856	>20
2011	343	1700	1.036	>20
2011	343	1715	0.934	>20
2011	343	1730	1.031	>20
2011	343	1745	1.029	>20
2011	343	1800	1.048	>20
2011	343	1815	1.105	>20
2011	343	1830	1.023	>20
2011	343	1845	1.089	>20
2011	343	1900	1.083	>20
2011	343	1915	1.058	>20
2011	343	1930	1.097	>20
2011	343	1945	1.079	>20
2011	343	2000	1.036	>20
2011	343	2015	1.075	>20
2011	343	2030	1.013	>20
2011	343	2045	1.104	>20
2011	343	2100	1.020	>20
2011	343	2115	1.066	>20
2011	343	2130	1.119	>20
2011	343	2145	1.118	>20
2011	343	2200	1.239	>20
2011	343	2215	1.209	>20

CAFO Air Quality Background Data

Year	Julian Day	Time	H2S PPM	NH3 PPM
2011	343	2230	1.173	>20
2011	343	2245	1.205	>20
2011	343	2300	1.227	>20
2011	343	2315	1.248	>20
2011	343	2330	1.291	>20
2011	343	2345	1.216	>20
2011	344	0	1.257	>20
2011	344	15	1.320	>20
2011	344	30	1.216	>20
2011	344	45	1.276	>20
2011	344	100	1.294	>20
2011	344	115	1.300	>20
2011	344	130	1.369	>20
2011	344	145	1.312	>20
2011	344	200	1.337	>20
2011	344	215	1.328	>20
2011	344	230	1.355	>20
2011	344	245	1.308	>20
2011	344	300	1.309	>20
2011	344	315	1.301	>20
2011	344	330	1.308	>20
2011	344	345	1.337	>20
2011	344	400	1.296	>20
2011	344	415	1.369	>20
2011	344	430	1.349	>20
2011	344	445	1.324	>20
2011	344	500	1.368	>20
2011	344	515	1.329	>20
2011	344	530	1.389	>20
2011	344	545	1.327	>20
2011	344	600	1.388	>20
2011	344	615	1.327	>20
2011	344	630	1.296	>20
2011	344	645	1.325	>20
2011	344	700	1.280	>20

CAFO Air Quality Background Data

Year	Julian Day	Time	H2S PPM	NH3 PPM
2011	344	715	1.306	>20
2011	344	730	1.327	>20
2011	344	745	1.297	>20
2011	344	800	1.342	>20
2011	344	815	1.264	>20
2011	344	830	1.226	>20
2011	344	845	1.175	>20
2011	344	900	1.135	>20
2011	344	915	1.045	>20
2011	344	930	0.966	>20
2011	344	945	1.016	>20
2011	344	1000	0.880	>20
2011	344	1015	0.929	>20
2011	344	1030	0.910	>20
2011	344	1045	0.910	>20
2011	344	1100	0.888	>20
2011	344	1115	0.859	>20
2011	344	1130	0.778	>20
2011	344	1145	0.726	>20
2011	344	1200	0.652	>20
2011	344	1215	0.596	>20
2011	344	1230	0.570	>20
2011	344	1245	0.523	>20
2011	344	1300	0.543	>20
2011	344	1315	0.540	>20
2011	344	1330	0.534	>20
2011	344	1345	0.502	>20
2011	344	1400	0.514	>20
2011	344	1415	0.541	>20
2011	344	1430	0.566	>20
2011	344	1445	0.526	>20
2011	344	1500	0.533	>20
2011	344	1515	0.533	>20
2011	344	1530	0.533	>20
2011	344	1545	0.519	>20

CAFO Air Quality Background Data

Year	Julian Day	Time	H2S PPM	NH3 PPM
2011	344	1600	0.544	>20
2011	344	1615	0.564	>20
2011	344	1630	0.566	>20
2011	344	1645	0.637	>20
2011	344	1700	0.716	>20
2011	344	1715	0.763	>20
2011	344	1730	0.817	>20
2011	344	1745	0.875	>20
2011	344	1800	0.980	>20
2011	344	1815	0.903	>20
2011	344	1830	0.916	>20
2011	344	1845	0.924	>20
2011	344	1900	0.956	>20
2011	344	1915	0.931	>20
2011	344	1930	1.019	>20
2011	344	1945	0.971	>20
2011	344	2000	1.027	>20
2011	344	2015	0.918	>20
2011	344	2030	0.944	>20
2011	344	2045	0.908	>20
2011	344	2100	0.967	>20
2011	344	2115	0.950	>20
2011	344	2130	0.973	>20
2011	344	2145	0.957	>20
2011	344	2200	0.965	>20
2011	344	2215	0.970	>20
2011	344	2230	0.916	>20
2011	344	2245	1.008	>20
2011	344	2300	0.974	>20
2011	344	2315	0.975	>20
2011	344	2330	0.911	>20
2011	344	2345	0.926	>20
2011	345	0	0.932	>20
2011	345	15	0.953	>20
2011	345	30	0.873	>20

CAFO Air Quality Background Data

Year	Julian Day	Time	H2S PPM	NH3 PPM
2011	345	45	0.903	>20
2011	345	100	0.941	>20
2011	345	115	0.917	>20
2011	345	130	0.961	>20
2011	345	145	0.964	>20
2011	345	200	1.067	>20
2011	345	215	1.046	>20
2011	345	230	1.007	>20
2011	345	245	1.036	>20
2011	345	300	0.961	>20
2011	345	315	0.929	>20
2011	345	330	0.935	>20
2011	345	345	0.998	>20
2011	345	400	0.956	>20
2011	345	415	0.988	>20
2011	345	430	0.886	>20
2011	345	445	0.932	>20
2011	345	500	0.928	>20
2011	345	515	0.843	>20
2011	345	530	0.926	>20
2011	345	545	0.864	>20
2011	345	600	0.948	>20
2011	345	615	0.859	>20
2011	345	630	0.910	>20
2011	345	645	0.845	>20
2011	345	700	0.837	>20
2011	345	715	0.845	>20
2011	345	730	0.851	>20
2011	345	745	0.836	>20
2011	345	800	0.850	>20
2011	345	815	0.841	>20
2011	345	830	0.828	>20
2011	345	845	0.831	>20
2011	345	900	0.821	>20
2011	345	915	0.790	>20

CAFO Air Quality Background Data

Year	Julian Day	Time	H2S PPM	NH3 PPM
2011	345	930	0.803	>20
2011	345	945	0.784	>20
2011	345	1000	0.791	>20
2011	345	1015	0.774	>20
2011	345	1030	0.780	>20
2011	345	1045	0.705	>20
2011	345	1100	0.662	>20
2011	345	1115	0.568	>20
2011	345	1130	0.535	>20
2011	345	1145	0.497	>20
2011	345	1200	0.480	>20
2011	345	1215	0.445	>20
2011	345	1230	0.441	>20
2011	345	1245	0.429	>20
2011	345	1300	0.433	>20
2011	345	1315	0.457	>20
2011	345	1330	0.407	>20
2011	345	1345	0.455	>20
2011	345	1400	0.454	>20
2011	345	1415	0.666	>20
2011	345	1430	0.683	>20
2011	345	1445	0.640	>20
2011	345	1500	0.609	>20
2011	345	1515	0.464	>20
2011	345	1530	0.451	>20
2011	345	1545	0.460	>20
2011	345	1600	0.481	>20
2011	345	1615	0.456	>20
2011	345	1630	0.458	>20
2011	345	1645	0.474	>20
2011	345	1700	0.505	>20
2011	345	1715	0.537	>20
2011	345	1730	0.630	>20
2011	345	1745	0.687	>20
2011	345	1800	0.690	>20

CAFO Air Quality Background Data

Year	Julian Day	Time	H2S PPM	NH3 PPM
2011	345	1815	0.737	>20
2011	345	1830	0.714	>20
2011	345	1845	0.686	>20
2011	345	1900	0.677	>20
2011	345	1915	0.713	>20
2011	345	1930	0.742	>20
2011	345	1945	0.763	>20
2011	345	2000	0.769	>20
2011	345	2015	0.748	>20
2011	345	2030	0.760	>20
2011	345	2045	0.767	>20
2011	345	2100	0.747	>20
2011	345	2115	0.771	>20
2011	345	2130	0.795	>20
2011	345	2145	0.797	>20
2011	345	2200	0.785	>20
2011	345	2215	0.783	>20
2011	345	2230	0.791	>20
2011	345	2245	0.798	>20
2011	345	2300	0.801	>20
2011	345	2315	0.824	>20
2011	345	2330	0.821	>20
2011	345	2345	0.842	>20
2011	346	0	0.823	>20
2011	346	15	0.808	>20
2011	346	30	0.793	>20
2011	346	45	0.770	>20
2011	346	100	0.790	>20
2011	346	115	0.758	>20
2011	346	130	0.754	>20
2011	346	145	0.728	>20
2011	346	200	0.733	>20
2011	346	215	0.726	>20
2011	346	230	0.731	>20
2011	346	245	0.735	>20

CAFO Air Quality Background Data

Year	Julian Day	Time	H2S PPM	NH3 PPM
2011	346	300	0.734	>20
2011	346	315	0.713	>20
2011	346	330	0.727	>20
2011	346	345	0.730	>20
2011	346	400	0.743	>20
2011	346	415	0.752	>20
2011	346	430	0.746	>20
2011	346	445	0.749	>20
2011	346	500	0.754	>20
2011	346	515	0.743	>20
2011	346	530	0.718	>20
2011	346	545	0.715	>20
2011	346	600	0.730	>20
2011	346	615	0.694	>20
2011	346	630	0.686	>20
2011	346	645	0.695	>20
2011	346	700	0.714	>20
2011	346	715	0.733	>20
2011	346	730	0.703	>20
2011	346	745	0.706	>20
2011	346	800	0.664	>20
2011	346	815	0.656	>20
2011	346	830	0.645	>20
2011	346	845	0.630	>20
2011	346	900	0.632	>20
2011	346	915	0.620	>20
2011	346	930	0.592	>20
2011	346	945	0.568	>20
2011	346	1000	0.590	>20
2011	346	1015	0.530	>20
2011	346	1030	0.512	>20
2011	346	1045	0.489	>20
2011	346	1100	0.497	>20
2011	346	1115	0.477	>20
2011	346	1130	0.481	>20

CAFO Air Quality Background Data

Year	Julian Day	Time	H2S PPM	NH3 PPM
2011	346	1145	0.488	>20
2011	346	1200	0.503	>20
2011	346	1215	0.498	>20
2011	346	1230	0.482	>20
2011	346	1245	0.501	>20
2011	346	1300	0.486	>20
2011	346	1315	0.471	>20
2011	346	1330	0.452	>20
2011	346	1345	0.458	>20
2011	346	1400	0.464	>20
2011	346	1415	0.438	>20
2011	346	1430	0.441	>20
2011	346	1445	0.439	>20
2011	346	1500	0.446	>20
2011	346	1515	0.432	>20
2011	346	1530	0.438	>20
2011	346	1545	0.440	>20
2011	346	1600	0.445	>20
2011	346	1615	0.463	>20
2011	346	1630	0.473	>20
2011	346	1645	0.474	>20
2011	346	1700	0.471	>20
2011	346	1715	0.482	>20
2011	346	1730	0.483	>20
2011	346	1745	0.491	>20
2011	346	1800	0.517	>20
2011	346	1815	0.507	>20
2011	346	1830	0.515	>20
2011	346	1845	0.521	>20
2011	346	1900	0.527	>20
2011	346	1915	0.540	>20
2011	346	1930	0.544	>20
2011	346	1945	0.527	>20
2011	346	2000	0.531	>20
2011	346	2015	0.556	>20

**CAFO Air Quality
Background Data**

Year	Julian Day	Time	H2S PPM	NH3 PPM
2011	346	2030	0.540	>20
2011	346	2045	0.563	>20
2011	346	2100	0.555	>20
2011	346	2115	0.554	>20
2011	346	2130	0.558	>20
2011	346	2145	0.559	>20
2011	346	2200	0.570	>20
2011	346	2215	0.580	>20
2011	346	2230	0.569	>20
2011	346	2245	0.541	>20
2011	346	2300	0.530	>20
2011	346	2315	0.540	>20
2011	346	2330	0.529	>20
2011	346	2345	0.552	>20
2011	347	0	0.538	>20
2011	347	15	0.545	>20
2011	347	30	0.560	>20
2011	347	45	0.518	>20
2011	347	100	0.525	>20
2011	347	115	0.525	>20
2011	347	130	0.541	>20
2011	347	145	0.538	>20
2011	347	200	0.537	>20
2011	347	215	0.539	>20
2011	347	230	0.550	>20
2011	347	245	0.576	>20
2011	347	300	0.530	>20
2011	347	315	0.505	>20
2011	347	330	0.492	>20
2011	347	345	0.527	>20
2011	347	400	0.545	>20
2011	347	415	0.527	>20
2011	347	430	0.518	>20
2011	347	445	0.492	>20
2011	347	500	0.466	>20

CAFO Air Quality Background Data

Year	Julian Day	Time	H2S PPM	NH3 PPM
2011	347	515	0.452	>20
2011	347	530	0.463	>20
2011	347	545	0.492	>20
2011	347	600	0.500	>20
2011	347	615	0.515	>20
2011	347	630	0.526	>20
2011	347	645	0.537	>20
2011	347	700	0.541	>20
2011	347	715	0.512	>20
2011	347	730	0.530	>20
2011	347	745	0.533	>20
2011	347	800	0.540	>20
2011	347	815	0.523	>20
2011	347	830	0.532	>20
2011	347	845	0.527	>20
2011	347	900	0.520	>20
2011	347	915	0.514	>20
2011	347	930	0.485	>20
2011	347	945	0.486	>20
2011	347	1000	0.497	>20
2011	347	1015	0.501	>20
2011	347	1030	0.499	>20
2011	347	1045	0.545	>20
2011	347	1100	0.451	>20
2011	347	1115	0.447	>20
2011	347	1130	0.439	>20
2011	347	1145	0.431	>20
2011	347	1200	0.448	>20
2011	347	1215	0.439	>20
2011	347	1230	0.452	>20
2011	347	1245	0.451	>20
2011	347	1300	0.460	>20
2011	347	1315	0.446	>20
2011	347	1330	0.434	>20
2011	347	1345	0.550	>20

CAFO Air Quality Background Data

Year	Julian Day	Time	H2S PPM	NH3 PPM
2011	347	1400	0.608	>20
2011	347	1415	0.480	>20
2011	347	1430	0.447	>20
2011	347	1445	0.452	>20
2011	347	1500	0.452	>20
2011	347	1515	0.434	>20
2011	347	1530	0.439	>20
2011	347	1545	0.442	>20
2011	347	1600	0.445	>20
2011	347	1615	0.453	>20
2011	347	1630	0.442	>20
2011	347	1645	0.448	>20
2011	347	1700	0.444	>20
2011	347	1715	0.446	>20
2011	347	1730	0.434	>20
2011	347	1745	0.442	>20
2011	347	1800	0.458	>20
2011	347	1815	0.461	>20
2011	347	1830	0.464	>20
2011	347	1845	0.475	>20
2011	347	1900	0.492	>20
2011	347	1915	0.484	>20
2011	347	1930	0.495	>20
2011	347	1945	0.509	>20
2011	347	2000	0.500	>20
2011	347	2015	0.484	>20
2011	347	2030	0.485	>20
2011	347	2045	0.478	>20
2011	347	2100	0.479	>20
2011	347	2115	0.470	>20
2011	347	2130	0.441	>20
2011	347	2145	0.443	>20
2011	347	2200	0.448	>20
2011	347	2215	0.489	>20
2011	347	2230	0.477	>20

CAFO Air Quality Background Data

Year	Julian Day	Time	H2S PPM	NH3 PPM
2011	347	2245	0.463	>20
2011	347	2300	0.430	>20
2011	347	2315	0.442	>20
2011	347	2330	0.447	>20
2011	347	2345	0.481	>20
2011	348	0	0.448	>20
2011	348	15	0.430	>20
2011	348	30	0.718	>20
2011	348	45	0.606	>20
2011	348	100	0.473	>20
2011	348	115	0.440	>20
2011	348	130	0.463	>20
2011	348	145	0.763	>20
2011	348	200	0.603	>20
2011	348	215	0.493	>20
2011	348	230	0.455	>20
2011	348	245	0.581	>20
2011	348	300	0.790	>20
2011	348	315	0.746	>20
2011	348	330	0.733	>20
2011	348	345	0.601	>20
2011	348	400	0.499	>20
2011	348	415	0.745	>20
2011	348	430	0.721	>20
2011	348	445	0.707	>20
2011	348	500	0.697	>20
2011	348	515	0.696	>20
2011	348	530	0.706	>20
2011	348	545	0.700	>20
2011	348	600	0.654	>20
2011	348	615	0.560	>20
2011	348	630	0.705	>20
2011	348	645	0.682	>20
2011	348	700	0.662	>20
2011	348	715	0.649	>20

CAFO Air Quality Background Data

Year	Julian Day	Time	H2S PPM	NH3 PPM
2011	348	730	0.726	>20
2011	348	745	0.708	>20
2011	348	800	0.685	>20
2011	348	815	0.657	>20
2011	348	830	0.660	>20
2011	348	845	NA	NA
2011	348	900	NA	NA
2011	348	915	NA	NA
2011	348	930	NA	NA
2011	348	945	NA	NA
2011	348	1000	NA	NA
2011	348	1015	NA	NA
2011	348	1030	NA	NA
2011	348	1045	NA	NA
2011	348	1100	NA	NA
2011	348	1115	NA	NA
2011	348	1130	NA	NA
2011	348	1145	NA	NA
2011	348	1200	NA	NA
2011	348	1215	NA	NA
2011	348	1230	NA	NA
2011	348	1245	NA	NA
2011	348	1300	NA	NA
2011	348	1315	NA	NA
2011	348	1330	NA	NA
2011	348	1345	NA	NA
2011	348	1400	NA	NA
2011	348	1415	NA	NA
2011	348	1430	NA	NA
2011	348	1445	NA	NA
2011	348	1500	0.545	>20
2011	348	1515	0.525	>20
2011	348	1530	0.562	>20
2011	348	1545	0.555	>20
2011	348	1600	0.575	>20

CAFO Air Quality Background Data

Year	Julian Day	Time	H2S PPM	NH3 PPM
2011	348	1615	0.573	>20
2011	348	1630	0.607	>20
2011	348	1645	0.622	>20
2011	348	1700	0.607	>20
2011	348	1715	0.616	>20
2011	348	1730	0.635	>20
2011	348	1745	0.644	>20
2011	348	1800	0.649	>20
2011	348	1815	0.644	>20
2011	348	1830	0.686	>20
2011	348	1845	0.697	>20
2011	348	1900	0.666	>20
2011	348	1915	0.638	>20
2011	348	1930	0.269	>20
2011	348	1945	0.145	>20
2011	348	2000	0.135	>20
2011	348	2015	0.131	>20
2011	348	2030	0.138	>20
2011	348	2045	0.134	>20
2011	348	2100	0.127	>20
2011	348	2115	0.122	>20
2011	348	2130	0.123	>20
2011	348	2145	0.121	>20
2011	348	2200	0.122	>20
2011	348	2215	0.114	>20
2011	348	2230	0.112	>20
2011	348	2245	0.118	>20
2011	348	2300	0.107	>20
2011	348	2315	0.085	>20
2011	348	2330	0.078	>20
2011	348	2345	0.077	>20
2011	349	0	0.088	>20
2011	349	15	0.067	>20
2011	349	30	0.062	>20
2011	349	45	0.060	>20

CAFO Air Quality Background Data

Year	Julian Day	Time	H2S PPM	NH3 PPM
2011	349	100	0.137	>20
2011	349	115	0.496	>20
2011	349	130	0.583	>20
2011	349	145	0.625	>20
2011	349	200	0.679	>20
2011	349	215	0.693	>20
2011	349	230	0.720	>20
2011	349	245	0.724	>20
2011	349	300	0.741	>20
2011	349	315	0.776	>20
2011	349	330	0.803	>20
2011	349	345	0.842	>20
2011	349	400	0.822	>20
2011	349	415	0.765	>20
2011	349	430	0.619	>20
2011	349	445	0.536	>20
2011	349	500	0.545	>20
2011	349	515	0.565	>20
2011	349	530	0.620	>20
2011	349	545	0.624	>20
2011	349	600	0.620	>20
2011	349	615	0.618	>20
2011	349	630	0.644	>20
2011	349	645	0.661	>20
2011	349	700	0.646	>20
2011	349	715	0.638	>20
2011	349	730	0.655	>20
2011	349	745	0.665	>20
2011	349	800	0.634	>20
2011	349	815	0.664	>20
2011	349	830	0.691	>20
2011	349	845	0.638	>20
2011	349	900	0.627	>20
2011	349	915	0.614	>20
2011	349	930	0.565	>20

CAFO Air Quality Background Data

Year	Julian Day	Time	H2S PPM	NH3 PPM
2011	349	945	0.573	>20
2011	349	1000	0.583	>20
2011	349	1015	0.563	>20
2011	349	1030	0.588	>20
2011	349	1045	0.774	>20
2011	349	1100	0.659	>20
2011	349	1115	0.628	>20
2011	349	1130	0.596	>20
2011	349	1145	0.586	>20
2011	349	1200	0.588	>20
2011	349	1215	0.568	>20
2011	349	1230	0.548	>20
2011	349	1245	0.549	>20
2011	349	1300	0.557	>20
2011	349	1315	0.570	>20
2011	349	1330	0.545	>20
2011	349	1345	0.561	>20
2011	349	1400	0.564	>20
2011	349	1415	0.617	>20
2011	349	1430	0.637	>20
2011	349	1445	0.621	>20
2011	349	1500	0.608	>20
2011	349	1515	0.556	>20
2011	349	1530	0.557	>20
2011	349	1545	0.547	>20
2011	349	1600	0.552	>20
2011	349	1615	0.562	>20
2011	349	1630	0.559	>20
2011	349	1645	0.564	>20
2011	349	1700	0.571	>20
2011	349	1715	0.569	>20
2011	349	1730	0.579	>20
2011	349	1745	0.589	>20
2011	349	1800	0.572	>20
2011	349	1815	0.556	>20

CAFO Air Quality Background Data

Year	Julian Day	Time	H2S PPM	NH3 PPM
2011	349	1830	0.573	>20
2011	349	1845	0.609	>20
2011	349	1900	0.618	>20
2011	349	1915	0.629	>20
2011	349	1930	0.627	>20
2011	349	1945	0.634	>20
2011	349	2000	0.621	>20
2011	349	2015	0.649	>20
2011	349	2030	0.694	>20
2011	349	2045	0.686	>20
2011	349	2100	0.654	>20
2011	349	2115	0.676	>20
2011	349	2130	0.743	>20
2011	349	2145	0.628	>20
2011	349	2200	0.690	>20
2011	349	2215	0.679	>20
2011	349	2230	0.712	>20
2011	349	2245	0.629	>20
2011	349	2300	0.683	>20
2011	349	2315	0.722	>20
2011	349	2330	0.612	>20
2011	349	2345	0.663	>20
2011	350	0	0.681	>20
2011	350	15	0.677	>20
2011	350	30	0.602	>20
2011	350	45	0.685	>20
2011	350	100	0.711	>20
2011	350	115	0.670	>20
2011	350	130	0.626	>20
2011	350	145	0.671	>20
2011	350	200	0.686	>20
2011	350	215	0.683	>20
2011	350	230	0.638	>20
2011	350	245	0.620	>20
2011	350	300	0.664	>20

CAFO Air Quality Background Data

Year	Julian Day	Time	H2S PPM	NH3 PPM
2011	350	315	0.677	>20
2011	350	330	0.657	>20
2011	350	345	0.609	>20
2011	350	400	0.633	>20
2011	350	415	0.665	>20
2011	350	430	0.653	>20
2011	350	445	0.572	>20
2011	350	500	0.630	>20
2011	350	515	0.652	>20
2011	350	530	0.610	>20
2011	350	545	0.593	>20
2011	350	600	0.609	>20
2011	350	615	0.638	>20
2011	350	630	0.641	>20
2011	350	645	0.609	>20
2011	350	700	0.599	>20
2011	350	715	0.665	>20
2011	350	730	0.683	>20
2011	350	745	0.620	>20
2011	350	800	0.680	>20
2011	350	815	0.593	>20
2011	350	830	0.620	>20
2011	350	845	0.574	>20
2011	350	900	0.560	>20
2011	350	915	0.594	>20
2011	350	930	0.592	>20
2011	350	945	0.586	>20
2011	350	1000	0.552	>20
2011	350	1015	0.563	>20
2011	350	1030	0.510	>20
2011	350	1045	0.623	>20
2011	350	1100	0.596	>20
2011	350	1115	0.565	>20
2011	350	1130	0.547	>20
2011	350	1145	0.554	>20

CAFO Air Quality Background Data

Year	Julian Day	Time	H2S PPM	NH3 PPM
2011	350	1200	0.539	>20
2011	350	1215	0.522	>20
2011	350	1230	0.453	>20
2011	350	1245	0.513	>20
2011	350	1300	0.636	>20
2011	350	1315	0.493	>20
2011	350	1330	0.465	>20
2011	350	1345	0.626	>20
2011	350	1400	0.478	>20
2011	350	1415	0.441	>20
2011	350	1430	0.698	>20
2011	350	1445	0.531	>20
2011	350	1500	0.426	>20
2011	350	1515	0.560	>20
2011	350	1530	0.456	>20
2011	350	1545	0.471	>20
2011	350	1600	0.496	>20
2011	350	1615	0.521	>20
2011	350	1630	0.532	>20
2011	350	1645	0.591	>20
2011	350	1700	0.611	>20
2011	350	1715	0.625	>20
2011	350	1730	0.652	>20
2011	350	1745	0.682	>20
2011	350	1800	0.679	>20
2011	350	1815	0.665	>20
2011	350	1830	0.656	>20
2011	350	1845	0.657	>20
2011	350	1900	0.716	>20
2011	350	1915	0.689	>20
2011	350	1930	0.673	>20
2011	350	1945	0.654	>20
2011	350	2000	0.646	>20
2011	350	2015	0.683	>20
2011	350	2030	0.660	>20

CAFO Air Quality Background Data

Year	Julian Day	Time	H2S PPM	NH3 PPM
2011	350	2045	0.649	>20
2011	350	2100	0.645	>20
2011	350	2115	0.613	>20
2011	350	2130	0.632	>20
2011	350	2145	0.713	>20
2011	350	2200	0.570	>20
2011	350	2215	0.663	>20
2011	350	2230	0.598	>20
2011	350	2245	0.663	>20
2011	350	2300	0.696	>20
2011	350	2315	0.603	>20
2011	350	2330	0.625	>20
2011	350	2345	0.659	>20
2011	351	0	0.653	>20
2011	351	15	0.615	>20
2011	351	30	0.609	>20
2011	351	45	0.620	>20
2011	351	100	0.636	>20
2011	351	115	0.653	>20
2011	351	130	0.658	>20
2011	351	145	0.657	>20
2011	351	200	0.642	>20
2011	351	215	0.583	>20
2011	351	230	0.635	>20
2011	351	245	0.650	>20
2011	351	300	0.652	>20
2011	351	315	0.662	>20
2011	351	330	0.659	>20
2011	351	345	0.670	>20
2011	351	400	0.662	>20
2011	351	415	0.613	>20
2011	351	430	0.639	>20
2011	351	445	0.646	>20
2011	351	500	0.635	>20
2011	351	515	0.635	>20

**CAFO Air Quality
Background Data**

Year	Julian Day	Time	H2S PPM	NH3 PPM
2011	351	530	0.618	>20
2011	351	545	0.660	>20
2011	351	600	0.584	>20
2011	351	615	0.621	>20
2011	351	630	0.599	>20
2011	351	645	0.612	>20
2011	351	700	0.636	>20
2011	351	715	0.646	>20
2011	351	730	0.644	>20
2011	351	745	0.667	>20
2011	351	800	0.686	>20
2011	351	815	0.675	>20
2011	351	830	0.689	>20
2011	351	845	0.677	>20
2011	351	900	0.637	>20
2011	351	915	0.635	>20
2011	351	930	0.562	>20
2011	351	945	0.562	>20
2011	351	1000	0.579	>20
2011	351	1015	0.532	>20
2011	351	1030	0.504	>20
2011	351	1045	0.566	>20
2011	351	1100	0.533	>20
2011	351	1115	0.499	>20
2011	351	1130	0.481	>20
2011	351	1145	0.453	>20
2011	351	1200	0.431	>20
2011	351	1215	0.415	>20
2011	351	1230	0.585	>20
2011	351	1245	0.465	>20
2011	351	1300	0.590	>20
2011	351	1315	0.543	>20
2011	351	1330	0.524	>20
2011	351	1345	0.544	>20
2011	351	1400	0.527	>20

CAFO Air Quality Background Data

Year	Julian Day	Time	H2S PPM	NH3 PPM
2011	351	1415	0.519	>20
2011	351	1430	0.513	>20
2011	351	1445	0.559	>20
2011	351	1500	0.530	>20
2011	351	1515	0.529	>20
2011	351	1530	0.491	>20
2011	351	1545	0.448	>20
2011	351	1600	0.627	>20
2011	351	1615	0.644	>20
2011	351	1630	0.652	>20
2011	351	1645	0.523	>20
2011	351	1700	0.514	>20
2011	351	1715	0.516	>20
2011	351	1730	0.541	>20
2011	351	1745	0.588	>20
2011	351	1800	0.621	>20
2011	351	1815	0.608	>20
2011	351	1830	0.597	>20
2011	351	1845	0.622	>20
2011	351	1900	0.639	>20
2011	351	1915	0.684	>20
2011	351	1930	0.729	>20
2011	351	1945	0.661	>20
2011	351	2000	0.699	>20
2011	351	2015	0.685	>20
2011	351	2030	0.667	>20
2011	351	2045	0.647	>20
2011	351	2100	0.664	>20
2011	351	2115	0.691	>20
2011	351	2130	0.704	>20
2011	351	2145	0.708	>20
2011	351	2200	0.684	>20
2011	351	2215	0.682	>20
2011	351	2230	0.735	>20
2011	351	2245	0.708	>20

CAFO Air Quality Background Data

Year	Julian Day	Time	H2S PPM	NH3 PPM
2011	351	2300	0.717	>20
2011	351	2315	0.738	>20
2011	351	2330	0.748	>20
2011	351	2345	0.724	>20
2011	352	0	0.710	>20
2011	352	15	0.709	>20
2011	352	30	0.752	>20
2011	352	45	0.737	>20
2011	352	100	0.737	>20
2011	352	115	0.757	>20
2011	352	130	0.744	>20
2011	352	145	0.755	>20
2011	352	200	0.768	>20
2011	352	215	0.761	>20
2011	352	230	0.765	>20
2011	352	245	0.772	>20
2011	352	300	0.743	>20
2011	352	315	0.757	>20
2011	352	330	0.754	>20
2011	352	345	0.736	>20
2011	352	400	0.739	>20
2011	352	415	0.717	>20
2011	352	430	0.726	>20
2011	352	445	0.743	>20
2011	352	500	0.733	>20
2011	352	515	0.728	>20
2011	352	530	0.713	>20
2011	352	545	0.681	>20
2011	352	600	0.693	>20
2011	352	615	0.700	>20
2011	352	630	0.694	>20
2011	352	645	0.676	>20
2011	352	700	0.695	>20
2011	352	715	0.705	>20
2011	352	730	0.703	>20

CAFO Air Quality Background Data

Year	Julian Day	Time	H2S PPM	NH3 PPM
2011	352	745	0.698	>20
2011	352	800	0.697	>20
2011	352	815	0.710	>20
2011	352	830	0.684	>20
2011	352	845	0.644	>20
2011	352	900	0.617	>20
2011	352	915	0.609	>20
2011	352	930	0.624	>20
2011	352	945	0.612	>20
2011	352	1000	0.607	>20
2011	352	1015	0.590	>20
2011	352	1030	0.546	>20
2011	352	1045	0.527	>20
2011	352	1100	0.506	>20
2011	352	1115	0.480	>20
2011	352	1130	0.503	>20
2011	352	1145	0.594	>20
2011	352	1200	0.540	>20
2011	352	1215	0.582	>20
2011	352	1230	0.552	>20
2011	352	1245	0.498	>20
2011	352	1300	0.522	>20
2011	352	1315	0.552	>20
2011	352	1330	0.540	>20
2011	352	1345	0.530	>20
2011	352	1400	0.561	>20
2011	352	1415	0.565	>20
2011	352	1430	0.587	>20
2011	352	1445	0.569	>20
2011	352	1500	0.601	>20
2011	352	1515	0.593	>20
2011	352	1530	0.587	>20
2011	352	1545	0.547	>20
2011	352	1600	0.570	>20
2011	352	1615	0.584	>20

CAFO Air Quality Background Data

Year	Julian Day	Time	H2S PPM	NH3 PPM
2011	352	1630	0.585	>20
2011	352	1645	0.579	>20
2011	352	1700	0.553	>20
2011	352	1715	0.628	>20
2011	352	1730	0.627	>20
2011	352	1745	0.588	>20
2011	352	1800	0.599	>20
2011	352	1815	0.590	>20
2011	352	1830	0.596	>20
2011	352	1845	0.597	>20
2011	352	1900	0.631	>20
2011	352	1915	0.669	>20
2011	352	1930	0.715	>20
2011	352	1945	0.643	>20
2011	352	2000	0.666	>20
2011	352	2015	0.681	>20
2011	352	2030	0.675	>20
2011	352	2045	0.670	>20
2011	352	2100	0.710	>20
2011	352	2115	0.674	>20
2011	352	2130	0.634	>20
2011	352	2145	0.706	>20
2011	352	2200	0.759	>20
2011	352	2215	0.788	>20
2011	352	2230	0.733	>20
2011	352	2245	0.701	>20
2011	352	2300	0.735	>20
2011	352	2315	0.761	>20
2011	352	2330	0.763	>20
2011	352	2345	0.742	>20
2011	353	0	0.742	>20
2011	353	15	0.759	>20
2011	353	30	0.749	>20
2011	353	45	0.752	>20
2011	353	100	0.791	>20

CAFO Air Quality Background Data

Year	Julian Day	Time	H2S PPM	NH3 PPM
2011	353	115	0.816	>20
2011	353	130	0.813	>20
2011	353	145	0.761	>20
2011	353	200	0.812	>20
2011	353	215	0.803	>20
2011	353	230	0.789	>20
2011	353	245	0.772	>20
2011	353	300	0.822	>20
2011	353	315	0.820	>20
2011	353	330	0.727	>20
2011	353	345	0.810	>20
2011	353	400	0.755	>20
2011	353	415	0.755	>20
2011	353	430	0.767	>20
2011	353	445	0.777	>20
2011	353	500	0.777	>20
2011	353	515	0.663	>20
2011	353	530	0.684	>20
2011	353	545	0.797	>20
2011	353	600	0.742	>20
2011	353	615	0.818	>20
2011	353	630	0.761	>20
2011	353	645	0.815	>20
2011	353	700	0.811	>20
2011	353	715	0.810	>20
2011	353	730	0.885	>20
2011	353	745	0.866	>20
2011	353	800	0.823	>20
2011	353	815	0.771	>20
2011	353	830	0.814	>20
2011	353	845	0.727	>20
2011	353	900	0.824	>20
2011	353	915	0.804	>20
2011	353	930	0.760	>20
2011	353	945	0.736	>20

CAFO Air Quality Background Data

Year	Julian Day	Time	H2S PPM	NH3 PPM
2011	353	1000	0.749	>20
2011	353	1015	0.677	>20
2011	353	1030	0.597	>20
2011	353	1045	0.634	>20
2011	353	1100	0.703	>20
2011	353	1115	0.669	>20
2011	353	1130	0.643	>20
2011	353	1145	0.626	>20
2011	353	1200	0.654	>20
2011	353	1215	0.589	>20
2011	353	1230	0.652	>20
2011	353	1245	0.602	>20
2011	353	1300	NA	>20
2011	353	1315	NA	>20
2011	353	1330	NA	NA
2011	353	1345	NA	NA
2011	353	1400	NA	NA
2011	353	1415	NA	NA
2011	353	1430	0.597	>20
2011	353	1445	0.691	>20
2011	353	1500	0.692	>20
2011	353	1515	0.632	>20
2011	353	1530	0.642	>20
2011	353	1545	0.650	>20
2011	353	1600	0.605	>20
2011	353	1615	0.507	>20
2011	353	1630	0.600	>20
2011	353	1645	0.496	>20
2011	353	1700	0.491	>20
2011	353	1715	0.538	>20
2011	353	1730	0.569	>20
2011	353	1745	0.590	>20
2011	353	1800	0.702	>20
2011	353	1815	0.669	>20
2011	353	1830	0.655	>20

CAFO Air Quality Background Data

Year	Julian Day	Time	H2S PPM	NH3 PPM
2011	353	1845	0.747	>20
2011	353	1900	0.652	>20
2011	353	1915	0.612	>20
2011	353	1930	0.628	>20
2011	353	1945	0.730	>20
2011	353	2000	0.666	>20
2011	353	2015	0.639	>20
2011	353	2030	0.737	>20
2011	353	2045	0.643	>20
2011	353	2100	0.639	>20
2011	353	2115	0.756	>20
2011	353	2130	0.700	>20
2011	353	2145	0.682	>20
2011	353	2200	0.685	>20
2011	353	2215	0.683	>20
2011	353	2230	0.690	>20
2011	353	2245	0.695	>20
2011	353	2300	0.703	>20
2011	353	2315	0.687	>20
2011	353	2330	0.704	>20
2011	353	2345	0.734	>20
2011	354	0	0.714	>20
2011	354	15	0.716	>20
2011	354	30	0.715	>20
2011	354	45	0.716	>20
2011	354	100	0.719	>20
2011	354	115	0.725	>20
2011	354	130	0.712	>20
2011	354	145	0.722	>20
2011	354	200	0.712	>20
2011	354	215	0.711	>20
2011	354	230	0.706	>20
2011	354	245	0.700	>20
2011	354	300	0.695	>20
2011	354	315	0.698	>20

CAFO Air Quality Background Data

Year	Julian Day	Time	H2S PPM	NH3 PPM
2011	354	330	0.774	>20
2011	354	345	0.749	>20
2011	354	400	0.763	>20
2011	354	415	0.763	>20
2011	354	430	0.775	>20
2011	354	445	0.760	>20
2011	354	500	0.768	>20
2011	354	515	0.750	>20
2011	354	530	0.803	>20
2011	354	545	0.780	>20
2011	354	600	0.734	>20
2011	354	615	0.755	>20
2011	354	630	0.750	>20
2011	354	645	0.754	>20
2011	354	700	0.854	>20
2011	354	715	0.798	>20
2011	354	730	0.895	>20
2011	354	745	0.825	>20